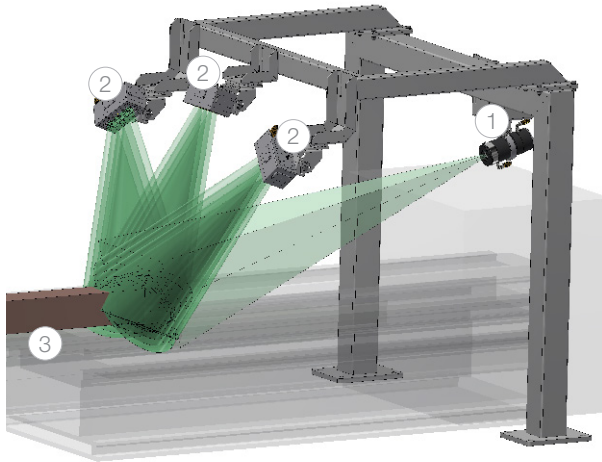


TECHNICAL DATA

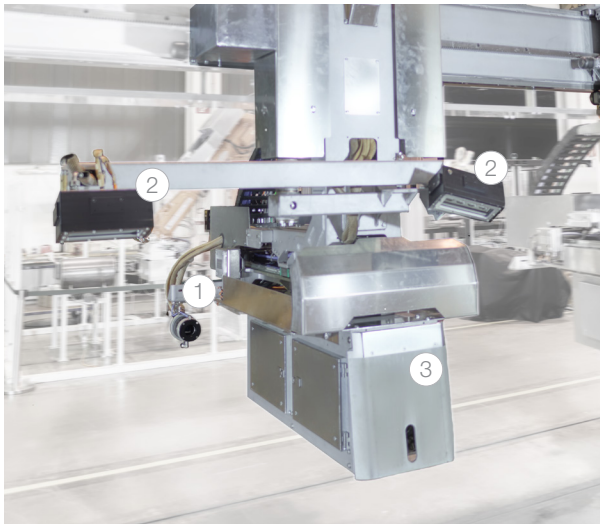
Alpine Metal Tech provides AMTident as standalone version for product identification and backtracking purposes or as version, installed on board of Alpine Metal Tech marking machines for fast marking process feedback and marking verification.



Stand alone

The AMTident standalone version serves as process checkpoints in highly advanced production systems. The system design is customized to site and environmental conditions. Scope is to provide secured product identification and therefore a reliable data basis for product tracking and tracing purposes.

- ① Camera with VIS, 3D or IR technology
- ② Illumination equipment
- ③ Customer specific product



On board

Alpine Metal Tech marking equipment both, existing and new installations, can easily be extended with AMTident. Two key technologies of a production system are combined to guarantee verified marking performance at highest level. Decreasing marking quality due to considerable wear of stamps or upcoming maintenance demand is immediately reported.

- ① Camera with VIS, 3D or IR technology
- ② Illumination equipment
- ③ Revolving head marking machine bridge type

Types	AMTident VIS, 3D, IR
Products	slab, bloom, billet, coil, plate, tube, rail, wheel
Marking technology	stamped, needled, hot spray, metal powder, paint/ink, labels, laser
Marking data	1D/2D codes, characters, numbers, special characters, logos
Software	Windows 10 incl. future updates
Data transfer protocol	TCP/IP, Profinet, Profibus, Ethernet/IP, OPC/UA
Temperature range	ambient to 1100° C
Options	water or air cooled protection housings, air curtain to avoid dust on sight glasses